

AUTOMATIC QUICK ACTING SHUT-OFF DEVICE

HDS17



WITT Automatic Quick Acting Shut-Off Devices (slam shut valves) for reliable protection against dangerous decomposition of acetylene in high pressure pipelines in accordance to EN ISO 14114.

Every Arrestor 100% tested.



The best Automatic Quick Acting Shut-Off Devices in the world

- a pressure sensitive piston valve stops explosive decomposition of acetylene
- immediately cuts off the gas supply in case of decomposition of acetylene

Operation / Usage

- as an Automatic Quick Acting Shut-Off Device according to EN ISO 14114 in high pressure pipelines, which are immediately supplied by more than six cylinders
- WITT Automatic Quick Acting Shut-Off Devices may be mounted in any position / orientation

- the maximum ambient / working temperature is 140°F

Maintenance

- it is recommended that an annual body leakage test is performed
- Automatic Quick Acting Shut-Off Devices are only to be serviced by the manufacturer

Approvals

Manufactured in accordance to EN ISO 15615

Company certified according to ISO 9001

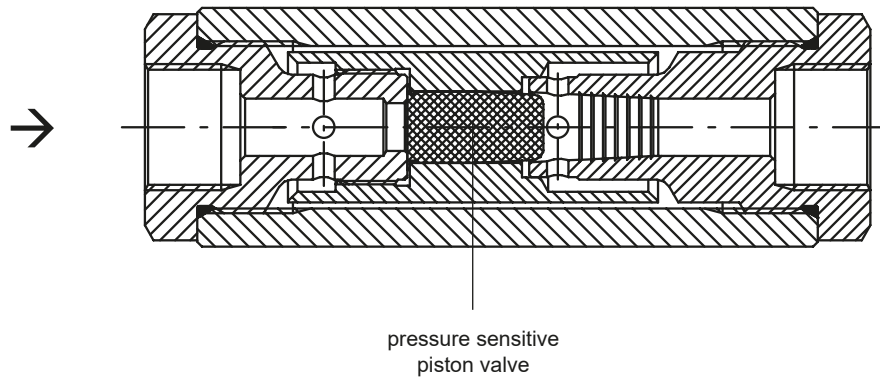
Model	Max. working pressure [PSI]	Materials	Weight [oz]	Connection [inch]	Order-No.
HDS17 IBEXU 2411	Acetylene (A) 363	Aluminium / galvanised steel, chromed, Elastomer	63.39	G 3/4 RH	017-001

Other connections available upon request

WITT Gas Controls LP, 1055 Windward Ridge Parkway, Suite 170, Alpharetta, Georgia 30005, USA
Tel. +1 770-664-4447, Fax +1 770-664-4448, witt-usa@wittgas.com, www.wittgas.us

AUTOMATIC QUICK ACTING SHUT-OFF DEVICE

HDS17



HDS17

