

PRESSURE REGULATOR

MINI



Compact pressure regulator for precise control of low flow rates.
Extremely reliable by high manufacturing quality and 100% tested.
Highest level of safety for Oxygen applications cause desingnet and cleaned for oxygen according to EIGA, CGA and AIGA.

Features

- applicable for
 - oxygen O₂
 - hydrogen H₂
 - methane CH₄
 - propane C₃H₈
 - carbon dioxide CO₂
 - mixtures from nitrogen/hydrogen N₂/H₂
 - other air gases
- lockable adjustment knob

Perfect suited for

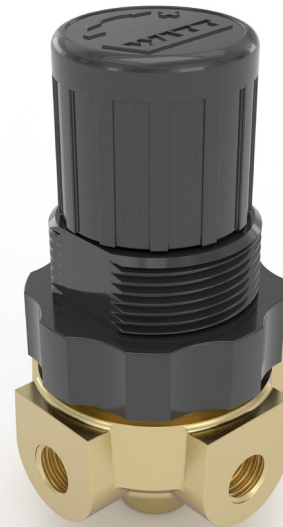
- analysis technology
- small burner systems
- sampling
- dosing
- use as pilot pressure regulator
- for installation in pipelines and panel mounting

Option

- stainless steel version
- medical applications (FDA-approved elastomers available)
- pressure gauge included

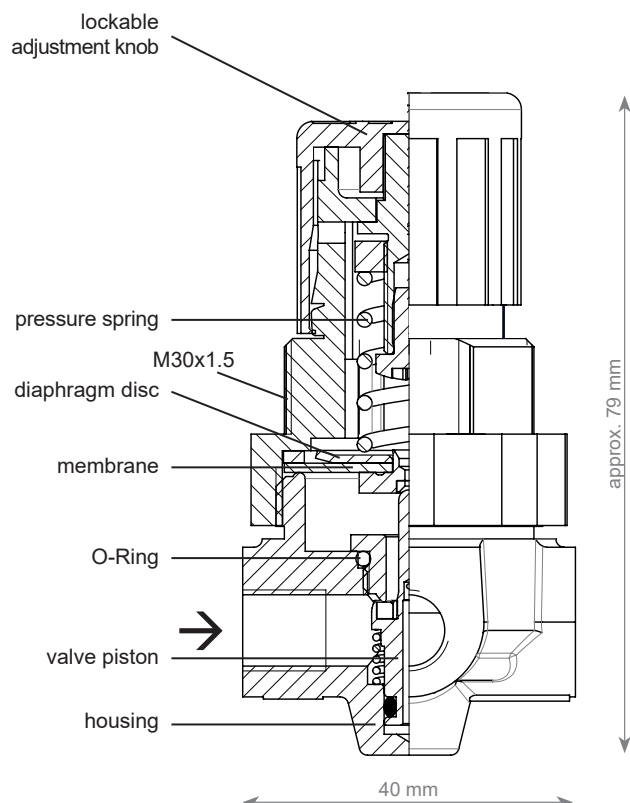
Technical features

- brass
- spring-loaded diaphragm
- G 1/8" female connections
- maximum inlet pressure 25 bar
- outlet pressure ranges 0.5-3 bar, 0.5-10 bar, 0.5-16 bar
- -30 °C to +60 °C
- designed for Oxygen Service in accordance with EIGA 13/20, CGA G-4.4 and AIGA 021/20: Oxygen Pipeline and Piping Systems
- cleaned for Oxygen Service in accordance with EIGA 33/18, CGA G-4.1 and AIGA 012/19: Cleaning of Equipment for Oxygen Service
- version in "relieving" and "non-relieving" selectable



Company certified according to ISO 9001, ISO 22000 and PED 2014/68/EU Module H.

ATEX 2014/34/EU with ignition hazard analysis according to EN 1127-1, DIN EN 13463-1 and ZH1/200.



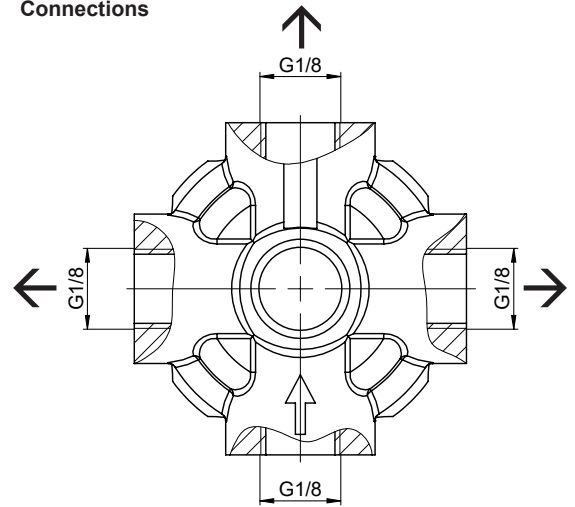
PRESSURE REGULATOR

MINI



	Versions	
	relieving	non-relieving
Gas	max. inlet pressure [bar]	
Argon (Ar)	25.0	25.0
Helium (He)	25.0	25.0
Natural gas (M)	–	25.0
LPG (P)	–	25.0
Hydrogen (H)	–	25.0
Nitrogen (N)	25.0	25.0
Carbon dioxide (CO ₂)	25.0	25.0
Oxygen (O)	25.0	25.0
Compressed air (D)	25.0	25.0
Outlet pressure	Order-No.	
0.5 - 16 bar MINI 16	277-001G	277-004G
0.5 - 10 bar MINI 10	277-002G	277-005G
0.5 - 3 bar MINI 3	277-003G	277-006G
Connections	G 1/8 F	
Screw plug	800.003300	
Seal kit	956.514400	
Nut (panel mounting)	803.067200	
Explosion protection ATEX	Ⓔ II 2G Ex h IIC T6 Gb	
Temperature range	-30 °C up to +60 °C	
Material	housing – brass diaphragm disc - stainless steel (1.4305) membrane - CR (O ₂ tested) O-Ring - 72 NBR valve piston - brass springs - stainless steel (1.4310)	
Weight	210 g	

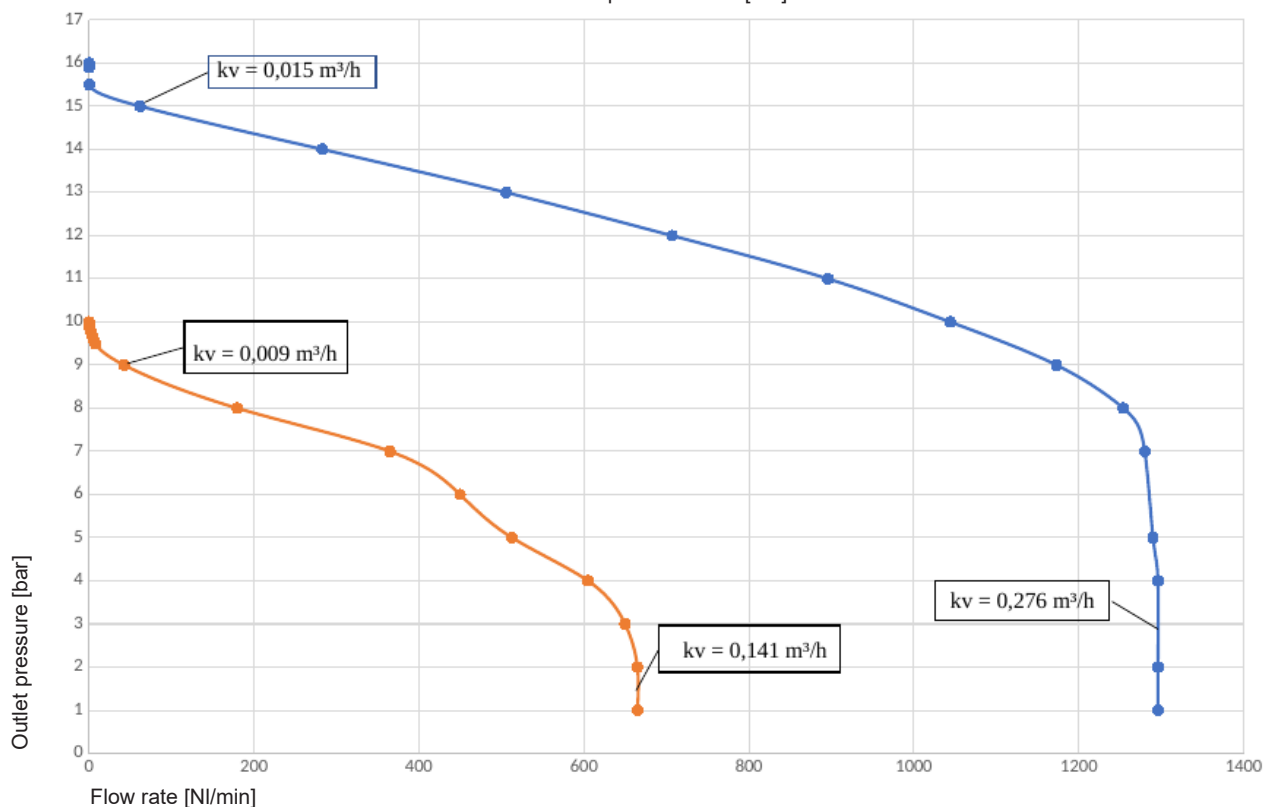
Connections



MINI 16 – 0.5-16 bar (flow rate nitrogen, 20 °C)

277-001G

Inlet pressure = 20 [bar]

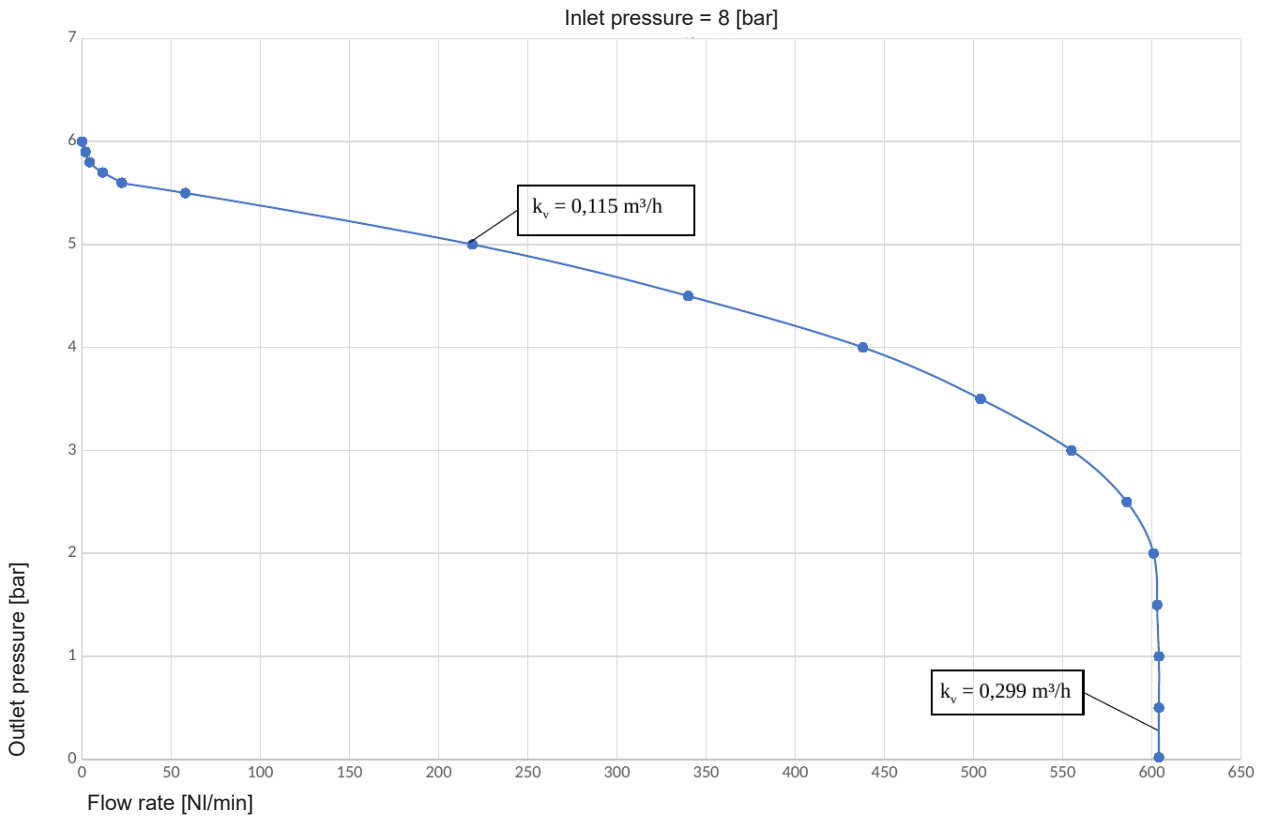


PRESSURE REGULATOR

MINI



MINI 10 – 0.5-10 bar (flow rate nitrogen, 20 °C)
277-002G



MINI 3 – 0.5-3 bar (flow rate nitrogen, 20 °C)
277-003G

